

**MOUND CEMETERY ASSOCIATION of Brooklyn Center MN**  
**Billing/mailling Address: 3515 69<sup>th</sup> Ave North Brooklyn Center MN 55429**  
**Cemetery: (952) 935-0954 CEMETERY MANAGER: Melanie Parrish**  
**Email Address: info@moundcemetery.com Web Site www.moundcemetery.com**

## MEMORIAL AUTHORIZATION FORM – 2025 (Revised January 1, 2025)

On \_\_\_\_\_ 20\_\_\_\_ the undersigned owners of graves located in  
 Section \_\_\_\_\_ Lot \_\_\_\_\_ Block \_\_\_\_\_ Grave \_\_\_\_\_ contracted with MOUND CEMETERY  
 ASSOCIATION to erect foundation(s) and/or install memorial located in Mound Cemetery.

The following described work will be at the grave of \_\_\_\_\_.

Mound Cemetery Association (the Cemetery) requires that all memorials will have a foundation. This foundation will be constructed to meet with the present rules and regulations of the Association governing the erection of monuments and markers. **The Mound Cemetery Association must approve all memorials in advance.** Please use the Memorial Description forms (page 2) attached and submit for approval.

This form can be emailed to **info@moundcemetery.com** Upon approval the Monument provider or family will be invoiced for all services and a permit number will be noted on the invoice.

The Monument provider will be responsible to set all upright monuments on foundation provided by the cemetery. The cemetery will set flat markers. All memorials will remain the owner's property. The Association is not responsible for damage to the memorial due to acts of God, improper installation, or vandalism. Contact your insurance agent for coverage, if applicable.

**All lot fees, to include cost of the graves, opening & closing, gate fees, foundation setting fees  
 MUST BE PAID IN FULL PRIOR TO THE COMMENCEMENT OF ANY WORK.**

**Mound Cemetery will install foundations or set/re-set monuments according to the fees below.**

DESCRIPTION OF SERVICES	Price	Total
Installation flat marker 2 x 1 Add \$300 4 inch cement border ( 2-8 x 1-8 x 0-4)	\$ 500.00	
Installation all companion flat marker (3 x 1 Add \$350 4 inch cement border)	\$ 550.00	
Installation Single Slant monument includes Pre-cast cement foundation.	\$ 700.00	
Double upright monuments, includes Pre-cast cement foundation	\$ 800.00	
Optional mill lane granite foundation can be added at an additional cost	Quote	
Plant Stand includes pot (Grave must have memorial to place stand)	\$ 450.00	
Gate Fee for Monument, Marker (Per Each)	\$25.00	
<i>It will be the responsibility of the selling monument dealer to set all monuments on the foundation provided by the cemetery.</i>	<b>TOTAL DUE</b>	
<p><b>By signing below, I acknowledge and have read the monument rules on page 3 3 &amp; 4 of this form.</b></p> <p style="text-align: center;">If setting is billed by cemetery to customer add MN Sales tax 8.53%            When Monument Company is billing customer, they are responsible to collect sales tax.            Vendors tax form must be on file.</p>		

<b>Lot/Grave Owner</b>	Name: _____ Email Address _____		
	Address: _____		
	City: _____	State: _____	Zip: _____
	Home Phone: ( ) _____	Work Phone: ( ) _____	
	Owner's Signature: _____		Date: _____

**MEMORIAL AUTHORIZATION FORM PAGE 2**

**Monument or Memorial FOR \_\_\_\_\_**

Please describe the details of the memorial below. Please attach signed proof & sketch a picture in the space provided.

DESCRIPTION	SKETCH
Type of stone:	<b>Must provide Supplier Layout with form</b>
Color:	
Height of memorial:	
Width of memorial:	
Size Of Memorial Base:	
Dimensions Of Flower Box	
Dimensions Of Marker	
<i>Please use one page per monument application. Thank you for your cooperation</i>	

<b>To the best of my knowledge all the information contained on this application is correct</b>			
X _____ Installing Company		Signature	
Date		Proposed Delivery Date:	

<b>FOR OFFICE USE ONLY</b>		
Proposed Unveiling Date:	Required Foundation Date:	Date Received By Cemetery:
Memorial Set Date	Foundation Installation Date	<b>PERMIT #</b>

<b>MEMORIAL PERMIT AUTHORIZATION</b> For Office Use Only	
Mound Cemetery Approval:	Date:

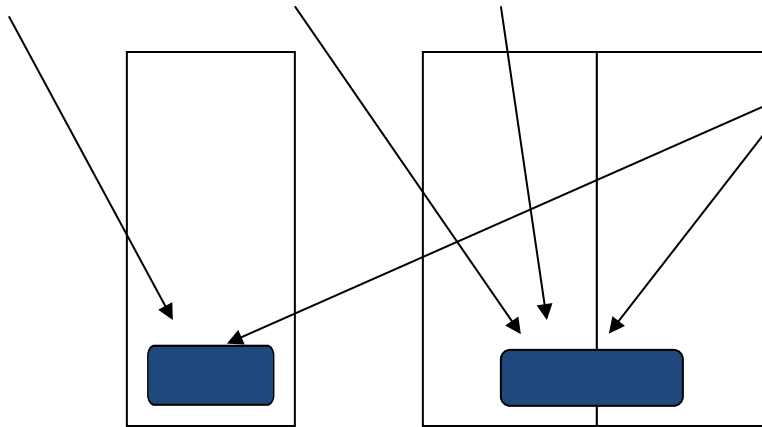
**All foundations will be installed within 2 weeks of receipt of payment.**

**SEE REGULATIONS ON PAGE 3**

**Mound Cemetery requires that all graves must be marked with the minimum of a 24 x 12 x 0-4 flat marker within one year of interment.** (See Mound Cemetery Purchase Agreement)

## MEMORIAL MOUND CEMETERY REQUIREMENTS

All flat markers, double flat markers and monuments will be placed at the foot of the grave see below.



Plant stands or bronze vases will be centered on the top side of the marker. Marker cement border can be drilled to accommodate plant stand.

Bronze vases must be mounted in a cement or granite foundation.

Bronze vases can be set in front of monuments.

**Vases for fresh flowers only no artificial.**

Plant stands will be centered behind monument.

### *Temporary Markers*

**Temporary markers all kinds are prohibited.**

### **Flat Markers Lawn Level Set**

Flat markers are permitted on any grave in all additions in the cemetery. **Third Addition section 3A is a marker only section. 1 (one) maker is permitted per grave in all additions.** If cremated remains are placed in an existing grave which is currently marked, current marker will have to be removed and be replaced with a marker with 2 names on it. (The old marker will be destroyed or buried on the grave site per owner's option.)

**The minimum size** of a flat marker lawn set on a single grave is 24 x 12 x 0-4 not including a 4-inch cement border. 24 x 12 x 0-4 markers can have an (optional) 4-inch cement border, which is added to the setting fee by Mound cemetery. Mound Cemetery makes no representation or warranties regarding a cement border provided by cemetery or others.

**The maximum size** of a marker on a single grave will not exceed 32 x 20 x 0-4. This marker will not have a cement border, but can a granite wash not to exceed size above. This marker can accommodate 1 or 2 names.

**All infant markers** Depends on Grave location either 24 x 12 x 0-4 or 20 x 10 x 0-4 (contact Cemetery)

**One companion marker** is permitted per **double grave** not to exceed 42 x 14 x 0-4 not including 4 inch cement border, markers can have an (optional) 4 inch cement border, which is added to the setting fee by Mound cemetery. Mound Cemetery makes no representation or warranties regarding a cement border provided by cemetery or others. Cement borders can be drilled at the top center to accommodate a single pole plant stand.

All Bronze markers will be mounted on a (optional Granite foundations with a 4-inch border) or cement foundation with a recessed area for the marker add 125.00 to setting fee. Vet's bronze markers may not be ground set on monument lots if monument is going to be placed. Veterans bronze markers can be mounted to the monument placed front or back.

### *Monument Lots*

Monuments are permitted on any grave in, **Section 0, 1 & 2. Addition 3 Section 3B Lot 1 Block 1 Section 3 Block 10 & 11 Lot 1.** Monuments will not exceed ½ the distance of the width of the grave. Single graves in Mound cemetery older section are 48 inches in width. **Monuments in Original Cemetery addition must have prior board approval and all new graves lots sold after Jan 1 2024 require a minimum of 6 graves.**

**Slant style single monument (Slant Monument Area)** is permitted on a single grave. The minimum & maximum slant monument will not exceed 24 inches in width 16 inches in height; slant will be set on a cement foundation which is included in the setting fee by the cemetery. An optional lawn set matching granite foundation or mill-lane foundation is permitted and will not exceed 32 x 24 x 0-4. Cement & granite foundations can be drilled in the top center to accommodate a plant stand.

**Double monuments** are permitted on 2 or more graves and can't exceed 48 inches in width including the monument base and 3 feet in height and 6-inch minimum thickness of the tablet. The monument base will not exceed 16 inches' front to back. No metal or stone vases are to be mounted on the base. Cement lawn level pre-cast foundation is included in the setting fee by the cemetery. An optional matching granite foundation or mill lane foundation is permitted. Cement & granite foundations can be drilled in the top center to accommodate a plant stand.

### ***Monument Lot's Section 3 Block 35 34 33 (Added 4-1-2017)***

**Single monument** is permitted on a single grave. The minimum & maximum monument will not exceed 24 inches in width 30 inches in height; and 6-inch minimum thickness of the tablet. monument base does not exceed 34 inches wide 14 inches' front to back. No metal or stone vases are to be mounted on the base. Cement foundation which is included in the setting fee by the cemetery. An optional lawn set matching granite foundation or mill lane foundation is permitted and will not exceed 36 x 24 x 0-4. Cement & granite foundations can be drilled in the top center to accommodate a plant stand.

**Double monuments** are permitted on 2 or more graves and can't exceed 48 inches in width including the monument base and 3 feet in height and 6-inch minimum thickness of the tablet. The monument base will not exceed 16 inches' front to back. No metal or stone vases are to be mounted on the base. Cement lawn level pre-cast foundation is included in the setting fee by the cemetery. An optional matching granite foundation or mill lane foundation is permitted. Cement & granite foundations can be drilled in the top center to accommodate a plant stand.

### **Flower Planting & Plant Stands**

For environmental reasons and the safety of visiting guests and cemetery worker's artificial flowers, plants &, wreaths; mementos, decorations & statuary items; bird feeders & shepherd hooks, will no longer be allowed in the cemetery. Decorations are described as any non-floral item.

Please remove any items that do NOT conform to these regulations. If not removed by the owners, they will be removed by Cemetery Personnel.

Any non-approved item or decoration will be removed from the grave area and will be placed in the maintenance area in the back of the cemetery. All non-approved items in this area of the cemetery will be disposed without notice. Mound Cemetery will not be responsible for the damage or loss of any personal items or mementos left on the graves. At the first frost plant material and decorations will be removed from plant stands. in spring winter decorations will be removed subject to weather conditions.

**Per the rules & regulations of the cemetery planting fresh/live plant and artificial materials are allowed in plant stands only. No inground planting without approved flower box.**



**Approved plant stands black single pole construction only; pots must be constructed from a frost-free ceramic material no plastic pots.**

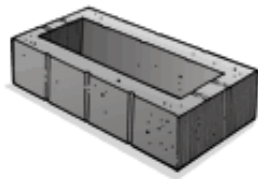
The cemetery requires a permanent memorial (marker or monument) be placed on the grave before a plant stand can be placed on a grave. If a plant stand is placed on a grave before a memorial is installed it will be removed by the cemetery. **No temporary markers are permitted at the cemetery.** Memorial Day decorations are permitted the Wednesday prior to Memorial Day and will be removed the Wednesday after Memorial Day. American flags are permitted only during the week of Memorial Day only.

**MONUMENT LOTS ONLY  
Optional Flower Box Planter**

Per the rules & regulations of the cemetery, planting in the ground is not permitted. In ground planting is permitted in cemetery approved Flower boxes only. The flower box described below are approved in monument areas including old addition "O", additions 1 & 2 Sections 1 & 2 and addition 3 section 3B lot 1 block 1.  
**DOUBLE MONUMENT LOTS ONLY**

The flower box must be constructed of fiberglass reinforced cement 14-1/2" x 29" x 6" and will be installed approximately 3 inches above ground level. This flower box must be installed by the cemetery. Any planter other than the one described will be removed. The placement of the flower box will be in front or behind of the monument depending on the monument's location on the grave.

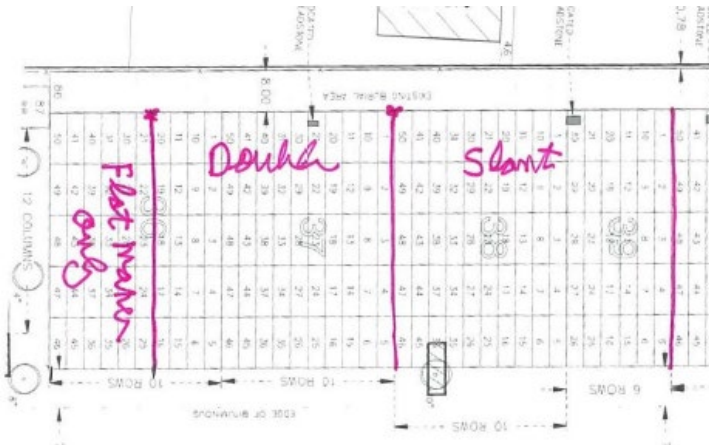
**One time cost perpetual flower care is available from the cemetery see general price list.**



No shrubs, trees, bushes, or evergreens may be planted in the flower box. Annual plants & flowers are permitted; no decorations are permitted in flower boxes. Decorations are described as any non-floral item.

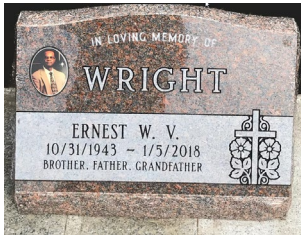
**NEW MOUND CEMETERY MONUMENT AREAS**

September 2023 Mound Cemetery will be opening two new monument areas: 1) A slant-monument only area & 2) an upright monument only area. These new areas will be located to the north of our existing monument area on the left-hand side of the road as you exit the cemetery. All graves will have an East to West orientation. The map below shows the general location:

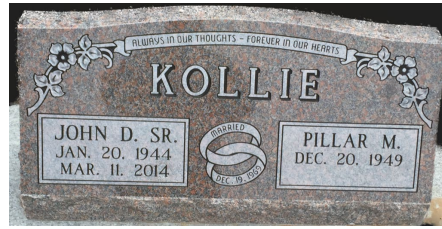


**SLANT MONUMENT AREA:** All purchases will require either a Single Slant (1 Grave) Monument or Double Slant (2 Graves) Monument located in Section 3 Block 38 & 39\*

All single graves (1 grave) will require a Slant Monument (minimum/maximum size 2 feet wide, 16 inches tall, 10 inches front to back). All double graves (2 graves) will require a Double Slant Monument (minimum/maximum size 3 foot wide, 16 inches tall, 10 inches front to back). See Monument examples below:



Sample of Single Slant

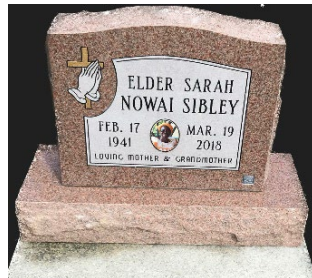


Sample of Double Slant

**UPRIGHT MONUMENT AREA: All Upright Monuments (Single or Double) will require a minimum purchase of two adjacent graves (2 Grave Lot) located in Section 3 Block 37\*\***

In the past, Mound Cemetery permitted placement of larger upright monuments on a single grave. We found that the alignment of these larger monuments was too close together and families wanted more space between monuments. So, in this new upright monument area, all monument purchases (Single or Double), whether intended for one or two internments, will require the purchase of a 2 Grave Lot. Only one monument will be allowed on each 2 Grave Lot and all Monuments irrespective of size will be centered on the 2 Grave Lot. If the purchased Lot is intended to be used for a single burial, we will use the grave on the left, leaving the 2<sup>nd</sup> grave on the right open for future burial.

SINGLE UPRIGHT MONUMENTS (see measurements below) will be centered in the middle of the 2 Grave Lot. If the second grave is eventually used for future burial, the single upright monument will have to be replaced with a double monument or the second internment's grave can be marked with a lawn level flat marker. One upright monument per 2 grave lot.



Sample of larger 2-piece Single Upright Monument

The minimum & maximum of single monuments will not exceed 24 inches in width and 30 inches in height; and 6-inch minimum thickness of the tablet. Monument base will not exceed 36 inches wide 14 inches front to back. No metal or stone vases will be mounted on the base.

DOUBLE UPRIGHT MONUMENTS (see measurements below) are intended to be used for 2 internments and will be centered in the middle of the 2 Grave Lot.



Sample of Double 2-piece Upright Monument

Double monuments will not exceed 48 inches in width including the monument base. 3 feet in height and 6-inch minimum thickness of the tablet. The monument base will not exceed 16 inches' front to back. No metal or stone vases are to be mounted on the base.